

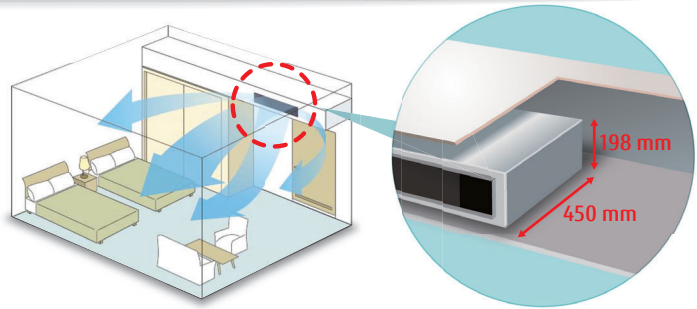
Mini Duct

Built-in Drain Pump



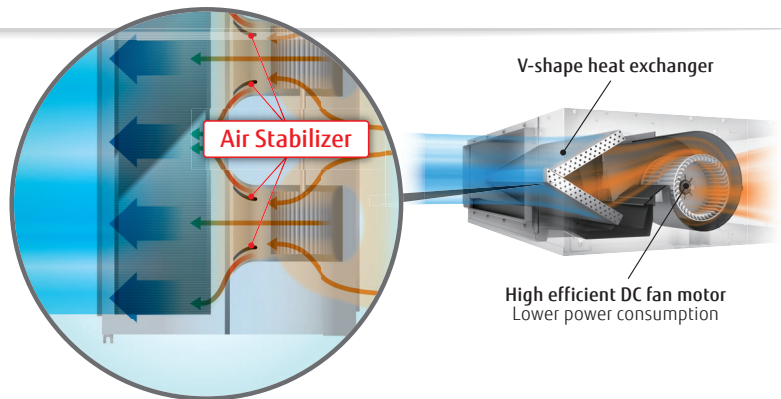
Large living space available

- Installation space can be reduced down to minimum depth 450 mm height 198 mm and compact design
- Minimum size: Depth 450 mm, Height 198 mm Volume 27% down compared with current model
- Lightweight: 15.5 kg 18% down (12/14 class)



Optimum airflow path and low noise operation

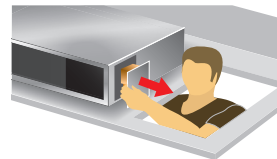
Low noise is realized drastically by stabilized airflow design



Easy design and maintenance for drain

By using the DC fan motor, it is possible to change the static pressure range from 0 to 50 Pa*. The change of static pressure range is possible by remote controller. *: 0 to 30 Pa. (12)

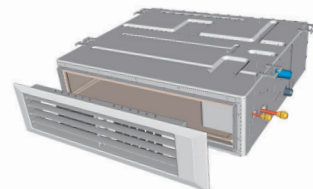
Built-in drain pump as standard:
Maintenance is easy



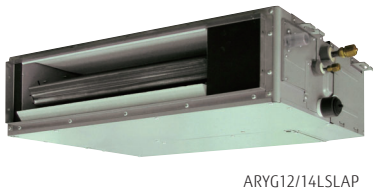
Parts can be replaced from the side of the body where maintenance is easier

Auto Louver Grille Kit (Option)

- Thin design provides a comfortable living environment over a wide area.
- Automatic louver grille provides comfortable air conditioning all the way down to the floor and matches the interior design well. (Optional)



Model : ARYG12LSLAP / ARYG14LSLAP / ARYG18LSLAP



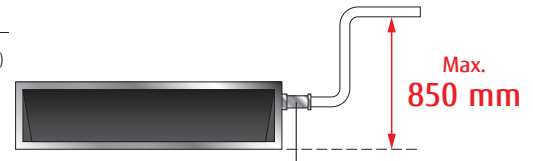
Specifications

			Tentative			
Model No.	Indoor unit		ARYG12LSLAP	ARYG14LSLAP	ARYG18LSLAP	
	Outdoor unit		AOYG12LALL	AOYG14LALL	AOYG18LBCB	
Power Source			Single-phase, ~230V, 50Hz			
Capacity	Cooling	kW	3.5 (0.9-4.4)	4.3 (0.9-5.4)	5.2 (0.9-5.9)	
	Heating		4.1 (0.9-5.7)	5.0 (0.9-6.5)	6.0 (0.9-7.5)	
Input Power	Cooling/Heating	kW	1.03/1.15	1.34/1.49	1.62/1.77	
EER	Cooling	W/W	3.40	3.21	3.21	
COP	Heating		3.56	3.35	3.38	
Pdesign	Cooling/Heating(-10°C)	kW	3.5/4.2	4.3/4.5	5.2/5.2	
SEER	Cooling	W/W	5.70	5.60	5.80	
SCOP	Heating		3.90	3.80	3.80	
Energy Efficiency Class	Cooling	A+				
	Heating	A				
Max. Operating Current	Cooling/Heating	A	7.5/10.0	9.0/12.5	9.0/14.5*	
Annual Energy Consumption	Cooling	kWh/a	215	269	314	
	Heating		1505	1656	934	
Moisture Removal		l/h	1.2	1.4	1.8	
Sound Pressure Level	Indoor (Cooling)	H/M/L/Q	31/27/25/23	35/30/27/23	33/29/26/23	
	Indoor (Heating)	H/M/L/Q	31/27/25/23	35/30/27/23	33/29/26/23	
	Outdoor(Cooling/Heating)	High	47/48	49/49	50/50	
Sound Power Level	Indoor(Cooling/Heating)	High	55/57	60/62	58/59	
	Outdoor(Cooling/Heating)	High	61/63	62/64	62/65	
Airflow Rate	Indoor / Outdoor	High	m³/h	650/1780	800/1910	940*/2380
Static pressure range (Standard)			Pa	0 - 30 (10)	0 - 50 (15)	0 - 50 (15)
Net Dimensions H x W x D Weight	Indoor		mm	198×700×450	198×700×450	198×900×450
			kg(lbs)	15.5 (34)	15.5 (34)	18.5 (41)
	Outdoor		mm	578×790×300	578×790×300	632*×799*×290*
			kg(lbs)	40 (88)	40 (88)	36 (79)
Connection Pipe Diameter (Liquid / Gas)			mm	6.35/9.52	6.35/12.70	6.35/12.70
Drain hose Diameter (I.D./O.D.)				25/32	25/32	5
Max Pipe Length (Pre-Charge)			m	25 (15)	25 (15)	25 (15)
Max Height Difference				15	15	15
Operation Range	Cooling	°CDB	-10 to 46	-10 to 46	-10 to 46	
	Heating		-15 to 24	-15 to 24	-15 to 24	
Refrigerant	Type (Global Warming Potential)		R410A (2,088)	R410A (2,088)	R410A (2,088)	
	Charge	kg(CO2eq-T)	1.15 (2.4)	1.25 (2.6)	1.20 (2.5)	

*That specification is not fixed yet.

Optional parts

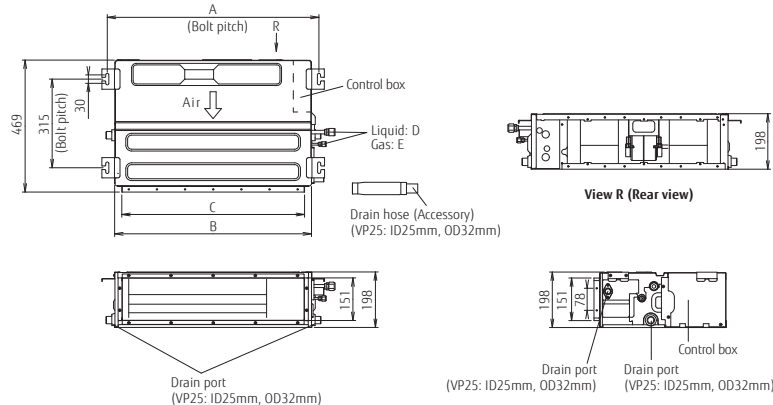
- Wired Remote Controller: UTY-RLRY, UTY-RNRYZ2, UTY-RVNYM Auto Louver Grille Kit: UTD-GXTA-W (ARYG12/14LSLAP)
 Simple Remote Controller: UTY-RSNYM, UTY-RSRY UTD-GXTB-W (ARYG18LSLAP)
 IR Receiver Kit: UTY-LBTYM External connect kit: UTY-XWZXZG
 Remote Sensor Unit: UTY-XSZX Wireless LAN Interface: UTY-TFSXZ1



Drain hose is standard accessory

Dimensions

(Unit : mm)



	ARYG12/14LSLAP	ARYG18LSLAP
A	752	952
B	700	900
C	650	850
D	6.35	9.52
E	12,7	15.88