

**PRODUCT LINEUP: SPLIT**

# Medium Static Pressure Duct

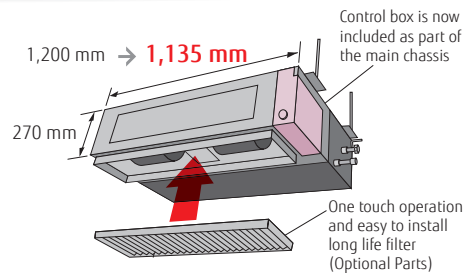
Standard

Single phase  
(30/36/45) (24)

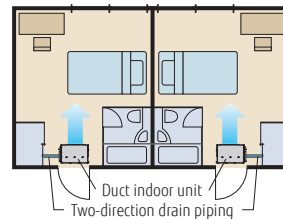


## Slim & Compact design

In the case of bottom return air connection, not only does the indoor unit design allow for installation in a narrow ceiling space of up to 270 mm, Further space savings have been achieved by mounting the control box internally inside the chassis.



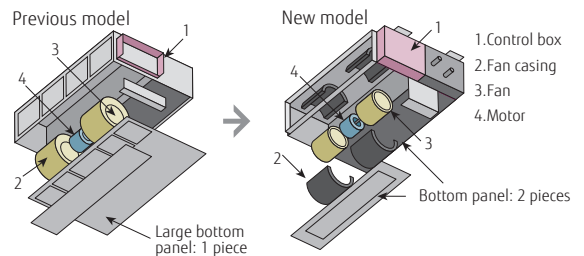
## Two-direction drain piping



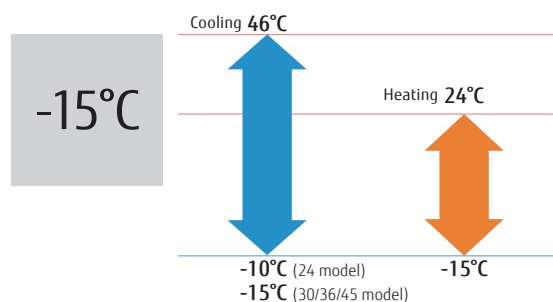
## Easy maintenance

Structural improvement is attained by making the bottom panel two pieces, front and rear. The internal fan casing is also manufactured in two pieces, namely upper and lower. The maintenance of the motor and fan can be easily carried out by removing the rear panel and the lower part of the casing while leaving the main chassis installed.

See below for the case of rear suction type



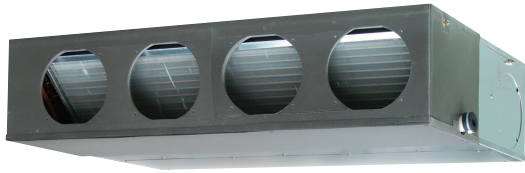
## Low ambient operation



**Model : ARYG24LMLA / ARYG30LMLE / ARYG36LMLE / ARYG45LMLA / ARYG36LMLA [3phase] / ARYG45LMLA [3phase]**



Wired R.C.



For ARYG24LMLA



For ARYG30/36LMLE



For ARYG45LMLA (Single-phase)



For ARYG36/45LMLA

**Specifications**

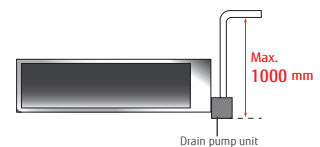
Model No.	Indoor unit		Tentative					ARYG36LMLA		ARYG45LMLA		
	Outdoor unit		ARYG24LMLA	ARYG30LMLE	ARYG36LMLE	ARYG45LMLA	ARYG45LMLA	ARYG36LATT	ARYG45LATT			
Power Source			Single-phase, ~230V, 50Hz					3-phase, ~400V, 50Hz				
Capacity	Cooling	kW	6.8 (0.9-8.0)	8.5 (2.8-10.0)	9.4 (2.8-11.2)	12.1 (4.0-13.0)	12.1 (4.0-13.3)	10.0 (4.7-11.4)	12.5 (5.0-14.0)			
	Heating		8.0 (0.9-9.1)	10.0 (2.7-11.2)	11.2 (2.7-12.7)	13.3 (4.2-15.2)	13.3 (4.2-15.5)	11.2 (5.0-14.0)	14.0 (5.4-16.2)			
Input Power	Cooling/Heating	kW	2.21/2.26	2.65/2.68	2.96/3.10	4.29/3.84	3.77/3.68	2.84/2.87	3.89/3.88			
EER	Cooling	W/W	3.08	3.21	3.18	2.82	3.21	3.52	3.21			
COP	Heating		3.54	3.73	3.61	3.46	3.61	3.90	3.61			
Pdesign	Cooling/Heating (-10°C)	kW	6.8/6.0	8.5/8.0	9.4/8.7	-	-	10.0/10.0	-			
SEER	Cooling	W/W	6.20	5.90	5.70	-	-	5.80	-			
SCOP	Heating		4.00	3.90	3.80	-	-	4.00	-			
Energy Efficiency Class	Cooling	A++		A+	A+	-	-	A+	-			
	Heating	A+		A	A	-	-	A+	-			
Max. Operating Current	Cooling/Heating	A	12.0/15.7*	17.0/17.0	18.5/20.0	23.5/23.5	21.0/21.0	8.5/8.5	9.5/9.5			
Annual Energy Consumption	Cooling	kWh/a	384	504	576	-	-	603	-			
	Heating		2098	2868	3202	-	-	3497	-			
Moisture Removal		l/h	2.5	2.5	3.0	4.0	4.0	3.0	4.5			
Sound Pressure Level	Indoor (Cooling)	H/M/L/Q	31/29/27/25					38/36/31/26				
	Indoor (Heating)	H/M/L/Q	31/29/27/25					40/36/31/26				
	Outdoor (Cooling/Heating)	High	53*/54*	53/55	54/55	58/58	55/55	51/53	54/54			
Sound Power Level	Indoor (Cooling/Heating)	High	60/62					65/67				
	Outdoor (Cooling/Heating)	High	66*/66*					67/69				
Airflow Rate	Indoor / Outdoor	High	m³/h	1100/2850	1900/3600	1900/3800	4,650/4,650	2100/6750	1800/6200	2100/6750		
Static pressure range (Standard)		Pa	30 to 150 (35)					30 to 150 (47)				
		mm	270x1135x700					270x1135x700				
Net Dimensions H x W x D	Indoor	kg (lbs)	38 (84)					40 (88)				
	Outdoor	kg (lbs)	714*820*315*					830x900x330				
Weight	Indoor	kg (lbs)	42 (-)					61 (134)				
	Outdoor	kg (lbs)	42 (-)					61 (134)				
Connection Pipe Diameter (Liquid / Gas)		mm	6.35/15.88					9.52/15.88				
Drain hose Diameter (I.D./O.D.)		mm	35.7/38.1					35.7/38.1				
Max Pipe Length (Pre-Charge)		m	30 (15)					50 (20)				
Max Height Difference		m	20					30				
Operation Range	Cooling	°CDB	-10 to 46					-15 to 46				
	Heating		-15 to 24					-15 to 24				
Refrigerant	Type (Global Warming Potential)		R410A (2,088)					R410A (2,088)				
	Charge	kg(CO2eq-T)	1.50 (3.1)					2.10 (4.4)				

\*That specification is not fixed yet.

**Optional parts**

- Wired Remote Controller: UTY-RNNYM, UTY-RVNYM
- Simple Remote Controller: UTY-RSNYM
- Flange (Round): UTD-RF204
- Flange (Square): UTD-SF045T
- Long Life Filter: UTD-LF25NA

- Remote Sensor Unit: UTY-XS2X
- Drain Pump Unit: UTZ-PX1NBA
- IR Receiver Kit: UTY-LRHYM
- External connect kit: UTD-EC55A
- Wireless LAN Interface: UTY-TFNXZ1



**Dimensions**

(Unit : mm)

